

# Lorien Dell

## Frequently Asked Questions (FAQ) and LorienDell Policies

### FACILITIES

#### How many guests do you accommodate?

We are limited to a maximum of 120 guests because of the stress a great many people can put on the forest environment. We also limit the number of ceremonies at LorienDell to six per season – the season is from mid-June to late September.

#### What facilities do you provide for the bridal party?

We open our home for the use of the immediate wedding party: 3 bedrooms and two bathrooms upstairs, and the living room and deck downstairs. In the Park, there is a gazebo, wedding arch and canopies. We have some chairs and banquet tables that may supplement what you rent from wedding equipment vendors.

#### Can we rearrange the canopies?

The gazebo and Food Tent are stationary. We set up the six Ivy Canopies and “E-Z-Up” canopies in an initial “standard” configuration. If you want to rearrange the canopies, you can coordinate movement of them with George or Lynn.



“Standard” Configuration



Food Tent & Cake Canopy

#### What about parking?

Parking in the lot around the house is reserved for the immediate wedding party. Your other guests may park in the area east of the house as well as the mowed spaces along the west side of the driveway. For more than 70 guests, you’ll need to assign someone to organize parking and to help avoid driving on unprepared areas.

#### Do you have electricity in the Park?

We have sufficient power to light the gazebo and power amplification and speakers for a DJ. A small generator is necessary for electric food warmers, chocolate fountains and/or full night lighting.

## **I'm concerned about my elderly guests - they can't walk very far.**

There is driving access to the Park where you can drop off and pick up people, equipment and supplies.

## **Can we do a "Themed Wedding"?**

We have great fun with themed weddings. LorienDell is particularly well-suited for Western-style themes or anything associated with forest themes, e.g., "Middle-Earth", "Renaissance" decorations and costumes.



It's also easy and relatively inexpensive to rent a horse-drawn carriage or a white horse for the groom.



## **What about children?**

Children are welcome! There is nothing to fear in the LorienDell forest: There are no snakes -- and no lions, tigers or bears! Children really can't get lost exploring the paths since the entire property is enclosed by fence. Parents, however, are responsible for the behavior of their children. Please tell your children to stay on the paths so they won't run into fences, get tangled up in sticker-bushes or step in undesirable things! Parents also need to tell their children not to pick flowers, approach the deer or harass other creatures, break small trees or enter our home unaccompanied by an adult.



Some wedding parties have taken very considerate measures to entertain their young guests, e.g., conducting treasure hunts, supervising outdoor games and even having a clown or face-painter. (See <http://www.loriendell.com/VendorList.html>)



## TIME

### **What about the wedding rehearsal?**

Normally you schedule time for the rehearsal for the evening prior to the wedding. Just coordinate times with us so we can properly support you.

### **Our photographer is concerned about optimum light – the where and when of the wedding party photos.**

The diffused light in the aspen forest provides for great photos any time of day. Pikes Peak background portraits are best in late afternoon. There are several especially nice spots on the forest paths for portraits. We will be happy to give you and your photographer a tour of the best photo locations.

### **Can my photographer make a separate visit?**

We would be happy to give your photographer or videographer a pre-wedding tour. Just have them coordinate and schedule the date and time.

### **When and how much can we decorate?**

Typically, your decoration team will prepare before the wedding rehearsal. Decorations can range from natural to little to lavish. Your only obligation is to coordinate your plans and intentions and schedule with George and Lynn.

### **Do I need to be at LorienDell for vendor deliveries?**

If you would prefer, we will help your vendors unload and will sign for your deliveries. Just schedule the time with George or Lynn.

### **What if we want more time at LorienDell?**

Typically, seven hours total are sufficient for vendor deliveries, decorating, wedding rehearsal, video/photographer preparation, photo shoots, ceremony time and cleanup. An additional five hours (for total of twelve hours) is usually sufficient for your reception. Timing is flexible – just coordinate arrival and departure times with us. For example, you might want four hours for decorating and wedding rehearsal on Friday and seven hours for preparation, ceremony, reception and cleanup on Saturday. You might decide you need another hour for final cleanup on Sunday.

The clock starts at first arrival and ends with last departure for each day. Additional time is charged at \$35/hour.

### **What if it rains (or snows!!)?**

Summer afternoon thundershowers are common in Colorado. Between the ceremony and reception at our daughter's wedding, it rained for about 30 minutes; guests sheltered under the canopies until it stopped. To help mitigate costs, see <http://www.wedsafe.com/event-liability-insurance.html>.

## **COSTS**

### **What are the options for time and use of LorienDell?**

There are two basic venue options. See [Costs](#) for details.

### **Do you require a deposit?**

A \$500 reservation and damage deposit is required to confirm and hold your dates. \$250 may be applied to your Site Fee. If there no damages or no additional charges are incurred, the remaining \$250 will be fully refunded within seven days after the ceremony.

**What is the payment schedule?** 50% of the Site Fee is due 90 days prior to the wedding; the remaining 50% is due 4 weeks before Your Day.

### **What are potential “hidden” costs at LorienDell?**

Your total expenses are dependant upon what you want to include in your ceremony or reception, how elaborate those items are, how much time and effort you can devote to the preparation for Your Day, how much help you have from friends and relatives, and, of course, the limitations of your budget. Typical additional, variable or incremental costs are: hiring a DJ or live music, renting a dance floor, decorations, professional photography, videography, catering (costs dependant upon menu and guest #s), and rental of chairs, tables, linens, and flatware.

## **VENDOR SUPPORT**

### **Do you recommend rental agencies or caterers?**

See <http://loriendell.com/images/Vendorlist.pdf> for links to reliable wedding support people (equipment vendors, officiates, DJ, photographers, caterers). We'd be happy to tell you about our experiences with them.

### **Can you recommend places to stay for our out-of-town guests?**

Accommodations for out-of-towners in our area range from moderately priced motels and VRBOs (*Vacation Rentals by Owners* aka *Home Away*) to mountain campgrounds.

### **Can you recommend good things for our guests to do in your area?**

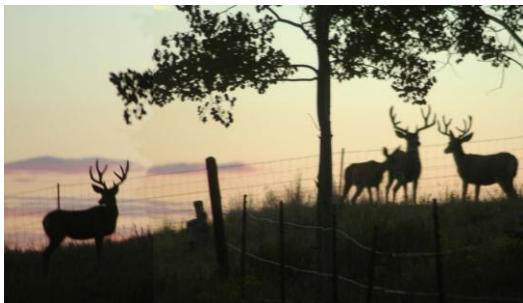
We strongly encourage you to encourage your out-of-town guests to take advantage of the great destinations and activities available in the Pikes Peak region. We've compiled some good links for things to do in our area. See them at <http://www.loriendell.com/Activities.html>

## LORIENDELL RULES & RESTRICTIONS

### Forest etiquette

LorienDell has 10 acres of forest and 3 acres of fields with almost two miles of clear walking paths. Please strongly encourage your guests to explore the paths and enjoy the forest and wildlife. However, they must not approach the deer or pick wildflowers.

Every summer a fawn is born in the forest. Its mother will protect her! Columbine is the Colorado state flower and is protected by Colorado law!



Some couples have included "forest etiquette" with their invitations and driving directions.

### What about smoking?

There is no smoking allowed in our house or on the balcony or deck. There are butt cans outside on the garage apron and in the LorienDell Park. Please ask your guests to use the cans or to police their cigarette butts. **BE AWARE: In extreme drought conditions, depending upon the current County fire restrictions, there may be a TOTAL BAN on outdoor smoking. See <http://www.co.teller.co.us/> for current status.**

### Do you serve alcohol?

We do not serve alcohol. NO HARD LIQUOR, but you may bring beer and wine *in moderation*. Positively no unauthorized liquor can be brought onto the grounds and no opened alcohol containers are allowed to leave the grounds. There can be ABSOLUTELY NO underage drinking. You are responsible for the behavior of your invited guests. Remember – there is no way you want Your Day to be marked by injury or worse *from an alcohol-related accident*. See <http://www.wedsafe.com/event-liability-insurance.html>.

### Setup & Cleanup

We recommend that you designate setup and cleanup personnel from other than your immediate wedding party. You'll be a bit occupied! And tired! Please ask them to leave the property as beautiful as it was when you arrived. Return the LorienDell tables and chairs to the storage shed and stack rented tables under the Ivy Canopies. Take out all litter and trash, including flower petals, party favors, cigarette butts, discarded cups, etc. Coordinate with us if you need to arrange cleanup for the next day, and ensure that your valuable centerpieces, decorations and gifts are protected from weather and forest creatures.

*We are honored to share this precious time with you, your family and your friends. It is our sincere desire that your memories of this day include the beauty of LorienDell and our hospitality.*

*Thank you for considering LorienDell. May God bless you, your friends and your new family with the peace and joy of His abiding presence.*

*George & Lynn*